



# CIVIL ENGINEERING & CONSTRUCTION

CAPABILITY STATEMENT

**DELTA GROUP IS ONE OF THE LARGEST DIVERSIFIED CONTRACTORS OF OUR TYPE IN THE WORLD TODAY. WE HAVE THE FINANCIAL, OPERATIONAL AND ORGANISATIONAL CAPACITY TO MANAGE HUNDREDS OF PROJECTS AT ANY ONE TIME - AUSTRALIA WIDE.**

ESTABLISHED IN VICTORIA SINCE 1988, DELTA GROUP NOW OPERATES IN ALL STATES AND TERRITORIES OF MAINLAND AUSTRALIA WITH OFFICES IN DARWIN, BRISBANE, SYDNEY, CANBERRA, MELBOURNE, ADELAIDE AND PERTH, AS WELL AS REGIONAL BRANCHES IN KARRATHA, LATROBE VALLEY, GEELONG, PORT PIRIE, ILLAWARRA AND HUNTER VALLEY.

OUR DIVERSIFIED COMMERCIAL CONTRACTING SERVICES INCLUDE STRUCTURAL DEMOLITION, ASBESTOS & HAZMAT REMOVAL, WASTE MANAGEMENT & RESOURCE RECOVERY, CIVIL ENGINEERING & CONSTRUCTION, LANDSCAPING & EXTERNAL WORKS, SITE REMEDIATION , REHABILITATION & REVEGETATION, HEAVY PLANT HIRE, MATERIALS SOLUTION MANAGEMENT, SPECIALIST MARINE & DISASTER RESPONSE.

**WE HAVE THE SCALE AND SYSTEMS TO MOBILISE OUR PEOPLE AND PLANT TO MEET THE DEMANDS OF ANY PROJECT IN ANY LOCATION: METRO, REGIONAL, REMOTE OR MARINE.**



**1000+**

EXPERIENCED & QUALIFIED STAFF



**1000+**

FLEET OF SPECIALIST PLANT & EQUIPMENT



**640+**

MILLION ANNUAL TURNOVER



#### **ACKNOWLEDGEMENT OF COUNTRY**

DELTA GROUP ACKNOWLEDGES FIRST NATIONS AUSTRALIANS AS THE TRADITIONAL OWNERS OF THE LAND AND SEA UPON WHICH WE WORK. WE RECOGNISE THEIR LIVING CULTURAL AND NATURAL LANDSCAPES AND PAY OUR RESPECTS TO ELDERS PAST, PRESENT AND EMERGING.

WE STRIVE TO MAINTAIN A WORKPLACE THAT FOSTERS ACCEPTANCE AND RESPECT FOR DIVERSITY. A WORKPLACE FREE OF DISCRIMINATION, HARASSMENT AND VIOLENCE IN ANY FORM. WE RECOGNISE THAT SAMENESS IS A MYTH AND SEEK TO ACHIEVE EQUALITY THROUGHOUT OUR BUSINESS AND ALL RELATED ENTITIES.

**NOTHING MATTERS MORE TO US THAN SAFETY. IT IS OUR MOST IMPORTANT BUSINESS PRACTICE AND WE DEMAND VISIBLE LEADERSHIP AT EVERY STAGE OF A PROJECT AND FROM EVERYONE INVOLVED.**

*RIGHT FIRST TIME* AND THE BEHAVIOURS WE EMPHASISE ARE BUILT UPON FIVE SAFETY ESSENTIALS. THESE SAFETY ESSENTIALS ARE INTEGRAL TO THE SAFE WORK POLICIES, PROCEDURES, METHODS AND PRACTICES THAT WE HAVE DEVELOPED TO PROTECT OUR PEOPLE AND OUR SUBCONTRACTORS FROM SERIOUS HARM.

**THINK**

before you start

**STOP**

if you feel unsafe

**INTERVENE**

if you see an unsafe act

**WEAR**

the correct PPE

**FOLLOW**  
the rules



## VISION, MISSION & VALUES



OUR VISION IS TO SHAPE THE URBAN AND INDUSTRIAL LANDSCAPES OF TOMORROW.



OUR MISSION IS TO UNDERSTAND THE PROJECT LIFECYCLE BETTER THAN ANY OTHER CONTRACTOR.

## ABOVE & BEYOND

ABOVE & BEYOND IS OUR ETHOS. THE SUM OF ALL OUR PARTS. IT'S OUR WAY OF WORKING AND OUR MEASURE FOR SUCCESS, NO MATTER WHAT WE SET OUT TO DO OR ACCOMPLISH. IT'S HOW WE SHAPE TOMORROW, FOR OURSELVES AND OUR CLIENTS.

**PEOPLE FIRST. THINK DIFFERENTLY. DETERMINED. DEPENDABLE.**

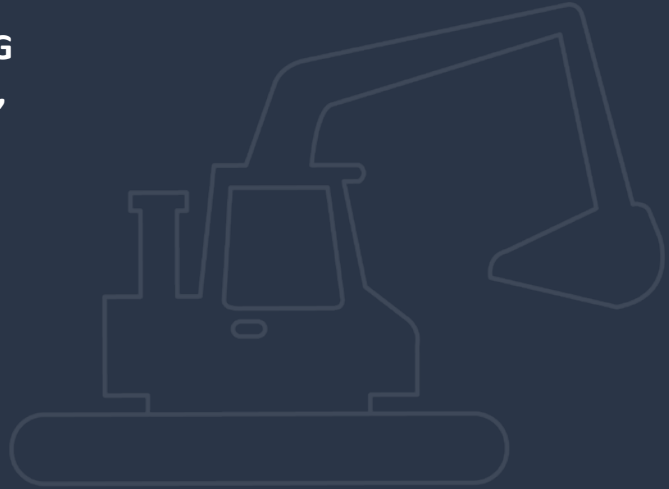


SHAPING TOMORROW



## **CIVIL ENGINEERING & CONSTRUCTION**

**FROM LARGE SCALE PUBLIC INFRASTRUCTURE PROJECTS FEATURING ROADS, BRIDGES, AIRPORTS, PIPELINES, DRAINAGE, PORTS AND UTILITIES TO DEEP BASEMENT CONSTRUCTION AND COMPLEX SOIL CONDITIONS ABOVE AND BELOW THE WATER TABLE; BOUTIQUE SUBURBAN RESIDENTIAL AND COMMERCIAL DEVELOPMENTS TO REGIONAL CONSTRUCTION PROJECTS - OUR CIVIL ENGINEERING AND CONSTRUCTION EXPERTISE IS RELIED UPON FOR SELF PERFORMING PROJECT MANAGEMENT SOLUTIONS INVOLVING AN ARRAY OF SPECIALIST SKILLS AND DISCIPLINES.**



### **CONTRACTING SERVICES**

- + Bulk & Detailed Earthworks
- + Piling & Foundations
- + Retention Systems
- + Ground Improvement & Slope Stabilisation
- + Site Infrastructure, Roads & Pavements
- + Specialist Marine, Drilling & Blasting
- + Materials Solution Management
- + Concrete/Steel Supply & Placement
- + Site Remediation
- + Containment Cell Construction & Management
- + Occupational Hygiene
- + Traffic Management
- + Geotechnical Surveys & Mapping (3D Drone)
- + Cultural, Heritage & Archaeological Surveying

# SECTOR CAPABILITIES

DELTA GROUP OPERATES AUSTRALIA WIDE, WITH OUR DAY-TO-DAY OPERATIONS INVOLVING THE SUPPLY OF SPECIALIST AND DIVERSIFIED CONTRACTING SERVICES TO A WIDE RANGE OF PUBLIC AND PRIVATE SECTOR CLIENTS:



COMMERCIAL



RETAIL & HOSPITALITY



RESIDENTIAL



HEALTH & AGED CARE



PUBLIC INFRASTRUCTURE



## **CIVIL ENGINEERING & CONSTRUCTION**

### **BULK & DETAILED EARTHWORKS**

- + Site clearing
- + Bulk cut to fill
- + Hardstands and engineered platforms
- + Batters and benches
- + Set-downs, pad and strip footings, pile caps
- + Onsite tipping and stockpile management

### **RETENTION SYSTEMS**

- + Temporary and permanent engineered solutions
- + Piled, shotcrete, in-situ and earth reinforced retaining structures
- + Shoring systems and capping beams
- + Anchored, cantilevered, gravity (gabion) walls
- + Ground anchors, soil nails and rock bolts
- + Internal propping and diaphragm walls

### **PILING & FOUNDATIONS**

- + Structural pad footings, rafts or pile cap systems
- + Slab in-ground, suspended slabs and super structure
- + Bored, driven, sheet and CFA piling
- + Post tensioning and FRP footings
- + Full service solutions: Design, Supply, Install & Certify

### **SITE INFRASTRUCTURE, ROADS & PAVEMENTS**

- + Stormwater and sewer, hydraulics, fire mains, potable water
- + Communications and electrical
- + Trenching, drains, swales, detention ponds, dam walls and wetlands
- + Roads and carparks, kerbs, line marking, bollards and signage

### **GROUND IMPROVEMENT & SLOPE STABILISATION**

- + Contamination remediation and disposal
- + Ground and soil mass engineering techniques
- + Ground stabilisation: Rock Wedge
- + Soil mixing and pressure grouting
- + Site Dewatering

### **SPECIALIST MARINE, DRILLING & BLASTING**

- + VHS rock and below water table solutions
- + Construction of sea wall and revetment structures
- + Foreshore remediation, coffer dams, barge and pontoon works
- + Pier refurbishment and construction







SHAPING TOMORROW

 DELTA GROUP

## **MATERIALS SOLUTION MANAGEMENT**

**DELTA GROUP HAS EXCLUSIVE ACCESS TO SIGNIFICANT VOLUMES OF AIRSPACE IN PRIME DISPOSAL LOCATIONS AND FOR ALL SOIL TYPES OR CLASSIFICATIONS. SOPHISTICATED, PURPOSE BUILT LOGISTICS SOFTWARE MAXIMISES OUTPUT AND ALLOWS US TO EFFICIENTLY MANAGE AN EXTENSIVE FLEET OF COMPANY OWNED AND SUB CONTRACT EARTHMOVING AND TRANSPORT RESOURCES.**



### **CONTRACTING SERVICES**

- + Spoil Management Strategy Development
- + 3D Drone Surveying
- + Earthmoving Transport & Logistics
- + Onsite Tipping & Stockpile Management
- + Contaminated Soil Classification & EPA Licensed Landfill Disposal
- + Site Remediation - Soil & Water Treatments
- + Land Rehabilitation Works
- + Mixed Excavation Waste Management
- + Green Star & NGER Aligned Reporting Systems
- + Mobile Crushing & Screening

COMBINED, OUR COMPANY OWNED AND  
SUB CONTRACT FLEET MOVED MORE THAN  
10,000,000m<sup>3</sup> OF SPOIL IN FY20. ENOUGH  
TO FILL THE MCG SIX TIMES OVER.



## PROJECT DELIVERY DRIVERS

OUR PEOPLE ARE WHAT SET US APART AND WHY OUR CLIENTS TRUST US TO DELIVER HIGH RISK, COMPLEX WORK PROGRAMMES ON TIME, ON BUDGET AND WITHOUT INCIDENT. THEY DON'T JUST BENEFIT FROM EXCITING AND DIVERSE PROJECTS WITH BLUE CHIP CLIENTS, THEY BENEFIT FROM A CULTURE OF COLLABORATION AND INNOVATION THAT ALLOWS THEM TO MAKE THE MOST OF THEIR REMARKABLE SKILLS AND TALENT.

### VALUE ENGINEERED SOLUTIONS

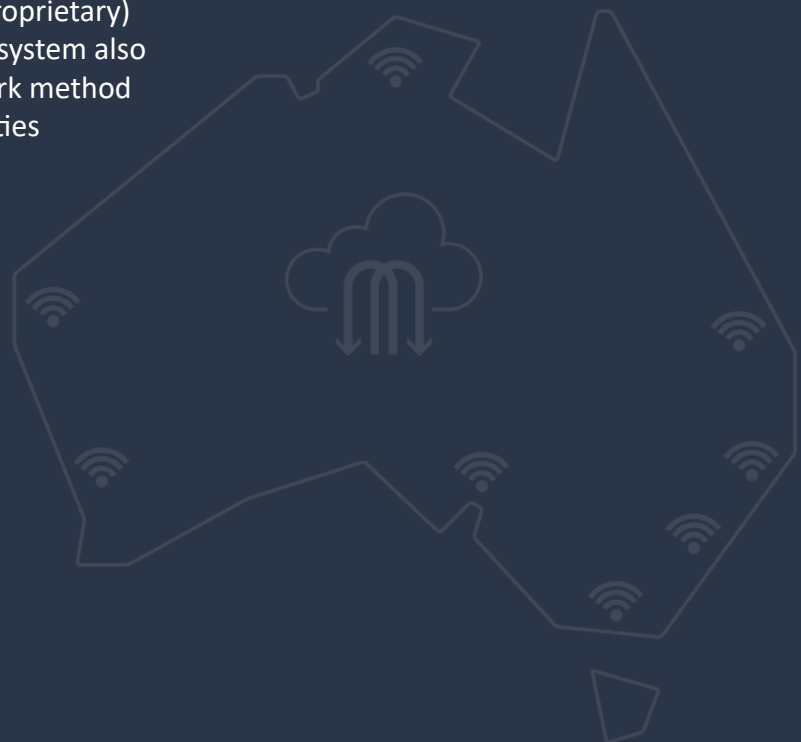
Delta Group has the unique capability to facilitate the transfer of technical and logistical knowledge in real time from past and current project sites across australia. Our purpose built (proprietary) cloud based integrated management system also supports the rapid deployment of work method improvements and site training activities to keep our people safe.

### KNOWLEDGE TRANSFER

- + Aggregated Data Analytics
- + Legal & Compliance
- + Resource Management
- + HIRAC
- + Programming & Sequencing

### SKILLS TRANSFER

- + Local Labour Content
- + Social Procurement
- + Training & Competencies
- + Licenses, Permits & Approvals
- + QA Monitoring & Review



## SUBCONTRACTOR MANAGEMENT

With more than 2,000 prequalified subcontractors across Australia we have the capacity and scale to maximise whole-of-life project costings through the recruitment, selection and appointment of the most qualified trades and specialist suppliers or consultants to execute the scope of works.

Our prequalification processes and operating policies ensure full compliance with the Building Code 2016 and only prequalified subcontractors will be deployed to Delta Group sites.

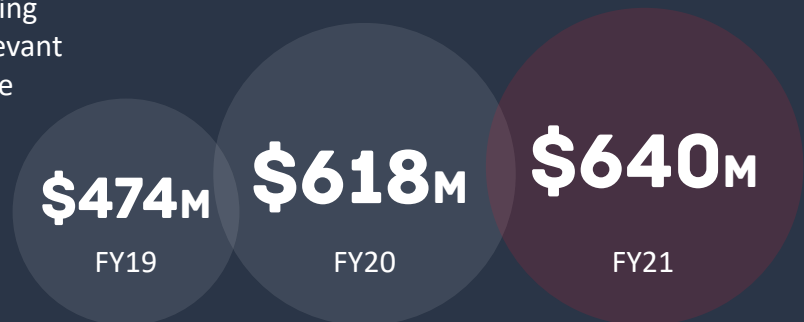
To achieve prequalified status subcontractors must adhere to best practice governance and risk management protocols:

- + Financial Performance
- + Insurances
- + Licenses & Accreditation
- + Risk Management
- + Quality, Safety & Environmental Management
- + Regulatory & Statutory Compliance
- + Safety Statistics
- + Relevant Experience
- + Key Personnel
- + Plant & Equipment

## PROJECT DELIVERY DRIVERS

### FINANCIAL CAPACITY

Consolidated group revenue in excess of \$640m per annum and a strong balance sheet reinforces our capacity to deploy capital in upgrading or expanding our fleet. We hold the relevant insurances and maintain the appropriate corporate licenses and individual competencies in accordance with best practice risk management and corporate governance protocols.



### INDUSTRIAL RELATIONS

Delta Group has a long history of harmonious, productive and proactive working relationships with its employees and peak Australian employee organisations for more than 30 years. Our Enterprise Agreements are registered with Fair Work Australia, ensuring Delta Group and all related entities are compliant with the Building Code 2016. The conditions of our EBAs are of the highest standard and we have never been subject to direct (protected or unprotected) industrial action at any time or on any project site Australia wide.



### QUALITY ASSURANCE

Our triple certified Quality, Safety and Environmental Management Systems have been proven over thousands of projects in high risk environments, allowing us to continuously improve our practices and to build on our reputation as best-in-class. They are also supported by certified Risk Management Systems and recognised by the Australian Government Building & Construction WHS Accreditation Scheme, as well as individual State and Territory Government accreditation and prequalification schemes.





SHAPING TOMORROW

 DELTA GROUP

# PROJECT DELIVERY HIGHLIGHTS



**ADELAIDE FESTIVAL PLAZA**  
WALKER CORP | ADELAIDE, SA



Bulk earthworks of very deep and large basement – 13,000m<sup>2</sup> in area; up to 14m in depth – 275,000t of spoil. Secant pile wall retention system – 948 retention piles; 700 + temporary anchors (up to 4 rows). Loading platform, vibration monitoring, dewatering. Tunnel infill/backfill. Elevation 8 & 9 shotcrete batter protection. Retention piling hardstand, pile trimming. Capping beam. Temporary anchors and walers. Foundation Piles & Piling Platform. Detailed Excavation & Footing Construction.



**MARTIN PLACE NORTH**  
LENLEASE | SYDNEY, NSW



Temp Works Design & Construction. Heritage retention/protection. Bulk/detailed excavation works - 30m below ground. Removal and remediation of ACM impacted soil. Demolition of temp service tunnels. Foundations and retention structures. Piling, Shoring & Site Infrastructure. Noise, Emissions (Silica Dust) & Vibration controls. Live rail and construction environments - existing (operational) and new tunnels within 3m of works. Geotechnical surveying and monitoring. Traffic management. >96% C&D waste recycled.



**OLD LONDON HOTEL**  
CREMA GROUP | MELBOURNE, VIC

Construction of piling platform for D-Wall construction and foundation piling. Removal of all piling/D-wall spoil (5,000 m<sup>3</sup> of Coode Island Silt). Capping beams. De-watering boreholes and pumps install. Hydraulic propping and mega brace (whaler). Foundation piles trimming. Detailed excavations for crane base and lift over run. Propping removal to facilitate B2-B1 ramp. Installation of Raking Props. Detailing of walls - trim/hole grout; remove chemical anchors.



**HMAS CERBERUS**  
LENLEASE | CRIB POINT, VIC

63,000t bulk earthworks (imported material). 21,500m<sup>3</sup> concrete/asphalt pavements. Stormwater drainage – 32km. Kerb and line marking – 4km. 300m retention wall construction. PFAS contaminated soil. Live base operations. Landscape maintenance, street sweeping. VH Electrical Substation Slabs. Foundation Piles/Pad Footings. Tension Anchors, Shotcrete/Retaining Walls. Removal/replacement uncontrolled fill, including construction of new onsite tip.



## PROJECT DELIVERY HIGHLIGHTS



### **GOLD COAST AIRPORT** LENDLEASE | COOLANGATTA, QLD

Live international/domestic airport operations. Site clearing – scraping of top soils, surface, sub-surface demolitions. Demolition of existing structures/pavements (5500m<sup>2</sup>), inc. cut penetrations. Site dewatering and overflow management: >1m litres of groundwater. 10,000m<sup>3</sup> PFAS contaminated spoil. Stormwater services installation. Piling platform: 14000m<sup>2</sup>. Services protection and asphalt works. Working & Laydown Pads. Concrete pavement/apron upgrade works: >2300m<sup>3</sup> Aircraft Specification concrete poured. Internal Site Roads, Final Roads & External Finishes.



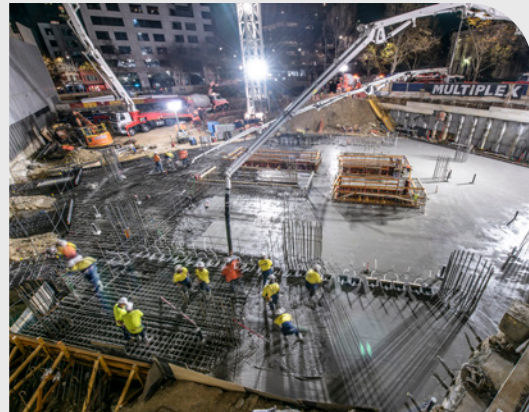
### **PARK AVENUE** MILBEX | MELBOURNE, VIC

Site Preparation, design and construction of 20m deep Diaphragm Wall retention system for a 4 storey basement, Ground Anchors, design and construct Bored foundation piles under polymer, bulk excavation, detailed excavation, service installation, waterproof membrane installation, 1200mm thick hydrostatic slab construction to 1000m<sup>2</sup> site. Works also included the identification, classification and removal of more than 1,600t of contaminated material.



### **VICTORIAN HEART HOSPITAL** JOHN HOLLAND | MELBOURNE, VIC

Bulk Earthworks circa 250,000m<sup>3</sup>. Retention/foundation piling, hybrid piled pad foundations, ground slab. Shotcrete and anchoring. Exhaust tunnels. Internal civil pavements. Major VicRoads signalised intersection upgrade. 500m of new combined services trench.



### **308 EXHIBITION STREET** MULTIPLEX | MELBOURNE, VIC

Civil works for the construction of two 70 storey towers. Piling; Capping beams; Bulk Earthworks; Retention including anchors and shotcrete walls. Footings and slabs included a 3000m<sup>3</sup> post tensioned raft – successfully poured in one day (Melbourne's largest ever core raft pour).

## PROJECT DELIVERY HIGHLIGHTS



### **TWEED VALLEY HOSPITAL** LENDLEASE | CUDGEN, NSW

Large Scale Bulk Earthworks: >100,000m<sup>3</sup>. Very high strength Basalt Rock. 2.2km of Stormwater drainage. Gabion Walls - 500m/3.5m high. Piling Pad Construction; Shotcrete to batters. 1.8km asphalt roadworks; 4000m<sup>2</sup> asphalt carpark construction; 2.5km kerb construction. Import Gravels. Enviro monitoring; contaminated area remediation. 6.9km of Service Trenching; electrical/plumbing. High level local and indigenous labour content.



### **WESTERN SYDNEY STADIUM** LENDLEASE | SYDNEY, NSW

97,000m<sup>3</sup> of bulk and detailed earthworks; pad, raft and pile cap foundation structures; piling; temporary and permanent retention structures. Remediation of 100,000t of asbestos contaminated soil, including the design and construction of an onsite containment cell. Archaeological studies and qualified supervision to preserve historical and cultural artefacts. Final grades to 57,000m<sup>2</sup> public realm.



### **ALDINGA B12 SUPER SCHOOL** SARAH CONSTRUCTIONS | ADELAIDE, SA

Stripping topsoil across 140,000m<sup>2</sup> site area. Bulk excavation 20,000m<sup>3</sup> and filling 30,000m<sup>3</sup> soil to reach subgrade levels under level 1 GITA supervision to AS3798. Preparing 20,000m<sup>2</sup> of building plateau and final trimming to 5mm tolerance. Construction of 600m dual lane DPTI spec road. 2000m<sup>3</sup> under-ground water detention system, bioretention basins and swales with Bidim and HDPE. 12,000m<sup>2</sup> of carparks with concrete kerbing, pavements, asphalt layers, linemarking and traffic signage.




### **AIR TRUNK** BUILT | MELBOURNE, VIC

55,000m<sup>2</sup> footprint - site strip, cut and fill, and piling hardstands to 30,000m<sup>2</sup>. Stage 4a included 80 foundation piles; Stage 5a required 100 foundation piles. Both stages required 2 crane bases, involving the Favco M2480D - the largest luffing jib tower crane in the world. Two raft slabs consisted of 2,700m<sup>2</sup>, 450mm thick post tensioned slabs with 1,200mm – 1,500mm deep edge beams and 1,200mm deep pile caps within the slab. 2,500m<sup>2</sup> of asphalt pavement and 1,500m<sup>2</sup> of heavy duty concrete pavements.



SHAPING TOMORROW

 DELTA GROUP

**DELTA GROUP IS AT THE FOREFRONT OF GENERATIONAL CHANGE AS THE WORLD TRANSITIONS TO A LOW CARBON, CLEAN ENERGY FUTURE.**



OUR LATE MODEL, NEW GENERATION HYDRAULIC EXCAVATORS HAVE THE CAPACITY TO MAINTAIN HIGH PERFORMANCE & PRODUCTIVITY WHILE MINIMISING HARMFUL EMISSIONS. OUR LATEST MACHINES CAN OPERATE WITH LEAD FREE & BIODEGRADABLE HYDRAULIC OIL & INCORPORATE UNIQUE SUSTAINABILITY FEATURES SUCH AS FULLY RECYCLABLE MANUFACTURING COMPONENTS.

### **HITACHI ZH210 HYBRID**

IN PARTNERSHIP WITH HITACHI WE ARE DEPLOYING CAPITAL IN NEW HYBRID EXCAVATORS TO REDUCE OUR CARBON FOOTPRINT AND SAVE ON FUEL COSTS. TO DATE, THE HYBRID EXCAVATORS ARE USING 34% LESS FUEL WHILE EMITTING 33% LESS CO<sub>2</sub>. IN OTHER WORDS, JUST ONE DELTA (HYBRID) DIGGER HAS THE POTENTIAL OF REDUCING CO<sub>2</sub> EMISSIONS BY MORE THAN 18 TONNES PER ANNUM. THAT'S MORE THAN THE AVERAGE AUSTRALIAN HOUSEHOLD PRODUCES EACH YEAR.



SHAPING TOMORROW



## AUSTRALIA'S LARGEST PRIVATELY OWNED FLEET

DELTA GROUP OPERATES AUSTRALIA'S LARGEST PRIVATELY OWNED FLEET OF SPECIALIST PLANT AND EQUIPMENT. PURPOSE BUILT TO SUPPORT OUR DIVERSIFIED SERVICES MODEL, OUR FLEET IS REGULARLY UPGRADED AND METICULOUSLY MAINTAINED TO EXACTING OEM, REGULATORY AND CLIENT REQUIREMENTS. SOPHISTICATED GPS, LOGISTICAL AND SCALE SYSTEMS TRACK THE MOVEMENT AND LOADS OF MORE THAN 1,000 TRUCKS AND MACHINES ACROSS AUSTRALIA.



**505**  
excavators

**12** **79** **75**  
20-29t 30-39t  
**>120t** **15** **16** **61**  
60-69t 80-89t 40-49t  
**54** **9** **184** **<10t**  
10-19t LONG REACH & TELESCOPIC

**98** **110**  
heavy rigid & heavy combo trucks  
**33**  
water trucks

**77** **32**  
front end loaders dozers  
**37**  
crushers  
**34** **15**  
rollers & compactors screens

**128**  
skid steers  
**12** drill rigs

**1000**  
hook & marrel skip bins



SHAPING TOMORROW

 DELTA GROUP

# GROUP HISTORY & MILESTONES

## 1970s

**INAUGURAL PROJECT:**  
YALLOURN NORTH,  
LATROBE VALLEY VICTORIA

## 1980s

**1981:** DELTA DEMOLITION ESTABLISHED  
**1985:** DELTA CIVIL ESTABLISHED  
**1988:** DELTA PTY LTD REGISTERED  
DELTA RECYCLING ESTABLISHED  
**1989:** DELTA NSW OFFICES OPENED



## 1990s

**1991:** MELBOURNE CRICKET GROUND DEMOLITION (STAGE 1)  
**1992:** AUSTRALIA'S TALLEST DEMOLITION - LEGAL & GENERAL BUILDING, SYDNEY  
**1995:** CROWN CASINO EARLY WORKS

## 2000s

**2001:** WHELAN THE WRECKER RE-ESTABLISHED  
DELTA RECYCLING SUNSHINE YARD OPENED  
**2002:** DELTA ACT OFFICES OPENED  
**2003:** MELBOURNE CRICKET GROUND DEMOLITION (STAGE 2)  
**2004:** DELTA WA OFFICES OPENED  
**2005:** DELTA RENT ESTABLISHED  
**2007:** DELTA QUEENSLAND OFFICES OPENED

WHELAN

## 2010s

**2010:** CMA CONTRACTING ACQUISITION  
**2013:** DELTA KARRATHA OFFICES OPENED  
**2015:** DELTA MALLARD CONTRACTING ESTABLISHED  
**2016:** DELTA RECYCLING TIMBER YARD ESTABLISHED (WHELAN THE WAREHOUSE)  
**2018:** SYDNEY METRO CITY & SOUTHWEST EARLY WORKS PROJECT  
GRANGE ENVIRONMENTAL SERVICES ESTABLISHED  
DELTA SA OFFICES OPENED  
**2019:** HAZELWOOD POWER STATION DEMOLITION PROJECT



## 2020s

**2020:** CROSS RIVER RAIL PROJECT, BRISBANE  
RIO TINTO PENINSULA PALMS PROJECT, THE PILBARA  
DARWIN OFFICES OPENED  
**2021:** PORT PIRIE OFFICES OPENED  
GEELONG OFFICES OPENED  
EASTERN PLANT HIRE ACQUISITION  
WIDI NGURAWA ESTABLISHED  
ILLAWARRA OFFICES OPENED







SHAPING TOMORROW

 DELTA GROUP

## GROUP OFFICES

### MELBOURNE | HEAD OFFICE

577 Plummer Street  
Port Melbourne VIC 3207  
p. +61 3 9646 8277  
e. delta@deltagroup.com.au

### GEELONG

2/131 Ryrie Street  
Geelong VIC 3220  
p. +61 3 9646 8277  
e. delta@deltagroup.com.au

### LATROBE VALLEY

Brodribb Road  
Morwell VIC 3840  
p. +61 3 9646 8277  
e. delta@deltagroup.com.au

### SYDNEY

83 Bourke Road  
Alexandria NSW 2015  
p. +61 2 8339 0588  
e. deltansw@deltagroup.com.au

### HUNTER VALLEY

Hart Road  
Loxford NSW 2327  
p. +61 2 8339 0588  
e. deltansw@deltagroup.com.au

### ILLAWARRA

Unit 16, 6 Bellambi Lane  
Bellambi NSW 2518  
p. +61 2 8339 0588  
e. deltansw@deltagroup.com.au

### BRISBANE

Suite 1, Level 3, 33 Remora Road  
Hamilton QLD 4007  
p. +61 7 3268 5395  
e. deltaqld@deltagroup.com.au



### PERTH

Unit 1, 32 Ledger Road  
Balcatta WA 6021  
p. +61 8 9240 6200  
e. deltawa@deltagroup.com.au

### PORT PIRIE

88A Solomontown Road  
Solomontown SA 5540  
p. +61 8 8351 3620  
e. deltasa@deltagroup.com.au

### KARRATHA

Lot 2891 Pemberton Way  
Karratha WA 6714  
p. +61 8 9240 6200  
e. deltawa@deltagroup.com.au

### CANBERRA

15 Geelong Street  
Fyshwick ACT 2609  
p. +61 2 6239 3411  
e. deltaact@deltagroup.com.au

### ADELAIDE

33-43 Port Road  
Thebarton SA 5031  
p. +61 8 8351 3620  
e. deltasa@deltagroup.com.au

### DARWIN

16/19 Smith Street Mall  
Darwin NT 0800  
p. +61 8963 5746  
e. deltant@deltagroup.com.au



SHAPING TOMORROW





[DELTAGROUP.COM.AU](http://DELTAGROUP.COM.AU)